

3-PC Casting Ball Valve Full Port, Mounting Pad, 1000 WOG, High Performance

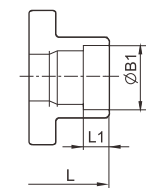
KV-M30, KV-M31, KV-M31-L, KV-M32 (Bracket Mount Type)

FEATURES:

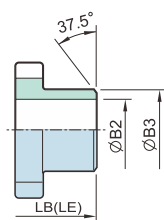
- Built-in ISO 5211 Mounting Pad for Easy Automation
- Anti-Static Devices for Ball-stem-body
- Blow-out Proof Stem
- Pressure Balance Hole in Ball Slot
- Pre-Load 2 Belleville Washers to Self-adjust Packing
- Casting Approved by TÜV AD 2000 Merkblatt W0
- Options: 1. Actuator 2. Limit Switch 3. Positioner

STANDARDS:

- Design: MSS SP-110
- Wall Thickness: EN 12516-3
- Pipe Thread **KV-M30**: ASME B1.20.1
DIN 2999 / 259, ISO 228 / 1
JIS B 0203, ISO 7 / 1
- Butt Weld **KV-M31**: ASME B16.25 (ØB2 Sch 40)
- Extended Butt Weld **KV-M31-L**: ASME B16.25 (ØB2 Sch 40)
- Socket Weld **KV-M32**: ASME B16.11
- Inspection & Testing: MSS SP-110

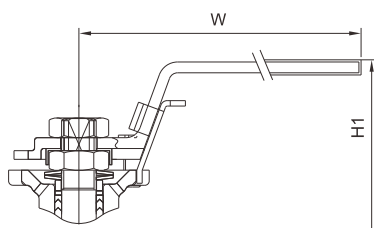


SOCKET WELD

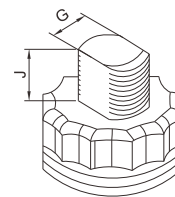
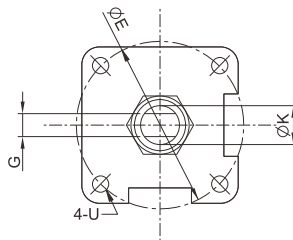
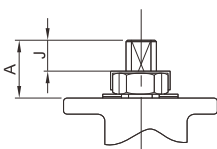


LB (Butt-welding Ends)

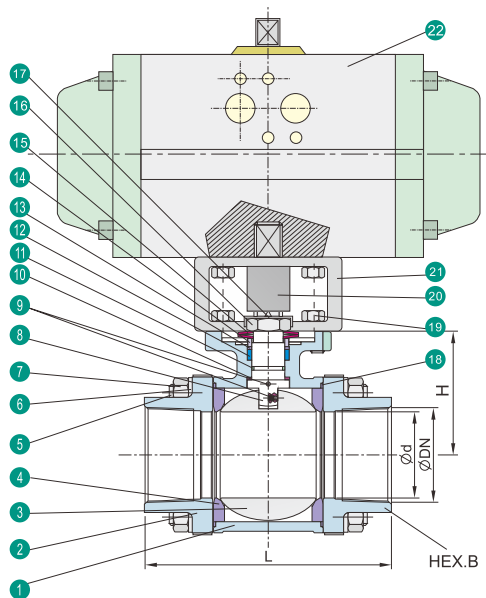
LE (Extended Butt-welding Ends)



SIZE: 1/4" ~ 3"



NO.	PART NAME	MATERIALS		
1	Body	CF8M	CF8	WCB
2	Cap (Thread)	CF8M	CF8	WCB
	Cap (Welding)	CF3M	CF3	
3	Ball	CF8M	CF8	
4	Ball Seat	TFM1600 / PTFE / RTFE		
5	Bolting	A193-B8 / A2-70		
6	Bolt Washer	SUS 304		
7	Bolt Nut	A194-8 / A2-70		
8	Stem	316	304	
9	Anti-Static Device	316	304	
10	Stem Seal-Ring	PTFE		
11	O-ring	FKM		
12	Stem Packing	PTFE		
13	Bushing	50%SS + 50%PTFE		
14	Gland	316		
15	Belleville Washer	301		
16	Stem Nut	A194-8		
17	Stop-Lock-Cap	304		
18	Body Gasket	PTFE		
19	Bolting	A2-70		
20	Stem Adapter	304		
21	Bracket	304		
22	Actuator	Pneumatic KP / Electric KQ		



Unit: mm

SIZE	d	L	LB	LE	LF	H	H1	W	E	G	K	U	A	J	D	C	R	T	f	N	h	L1	B1	B2	B3	HEX.B	ISO 5211
1/4"	10.6	68	68	225	N/A	29.5	76	135	42	6.3	3/8-24UNF	M5	17.3	10.4	—	—	—	—	—	—	—	10	14.2	9.3	18	23.5	F04
3/8"	12.7	68	68	225	N/A	29.5	76	135	42	6.3	3/8-24UNF	M5	17.3	10.4	—	—	—	—	—	—	—	10	17.8	12.5	18	23.5	F04
1/2"	15.0	73	73	225	130	35.5	83	135	42	6.3	3/8-24UNF	M5	20.3	11.8	95	65	45	16	2	4	14	10	21.8	15.8	22	28.0	F04
3/4"	20.0	80	90	225	150	38.5	88	135	42	6.3	3/8-24UNF	M5	20.3	11.8	105	75	58	18	2	4	14	13	27.3	20.9	28	34.5	F04
1"	25.0	90	100	245	160	45.5	98	170	50	9.0	3/16-18UNF	M6	23.3	12.5	115	85	68	18	2	4	14	13	34.0	26.7	34	42.0	F05
1-1/4"	32.0	110	110	255	180	51.0	103	170	50	9.0	3/16-18UNF	M6	23.3	12.5	140	100	78	18	2	4	18	16	42.8	35.1	43	52.0	F05
1-1/2"	38.0	120	125	260	200	60.5	110	200	70	9.6	5/8-18UNF	M8	23.8	15.1	150	110	88	18	3	4	18	16	49.0	40.9	50	58.5	F07
2"	50.0	140	150	275	230	68.5	119	200	70	9.6	5/8-18UNF	M8	23.8	15.1	165	125	102	20	3	4	18	17	61.4	52.5	61	71.5	F07
2-1/2"	63.5	185	190	330	290	86.5	147	250	102	16.0	7/8-14UNF	M10	42.5	23.5	185	145	122	22	3	8	18	17	74.0	62.7	76	86.5	F10
3"	76.0	205	220	356	310	94.5	155	250	102	16.0	7/8-14UNF	M10	42.5	23.5	200	160	138	24	3	8	18	17	90.0	78.0	92	101.0	F10

*M3 Face to Face dimensions are available