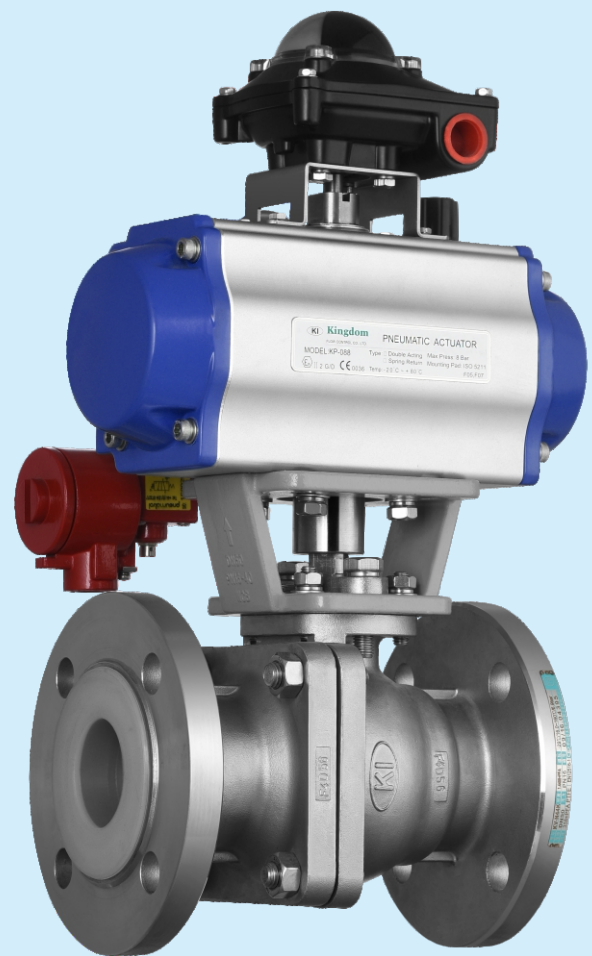
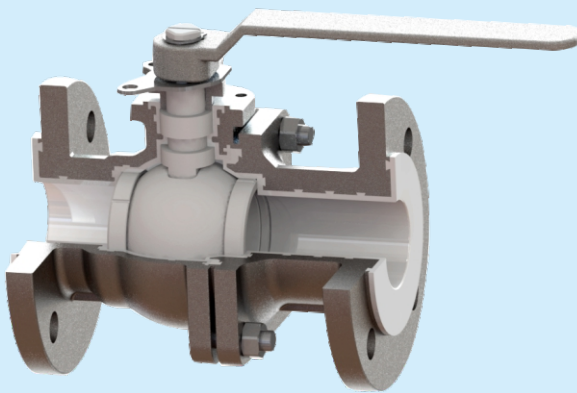
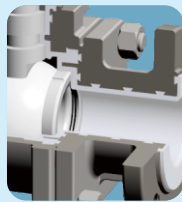


# 衬氟球阀

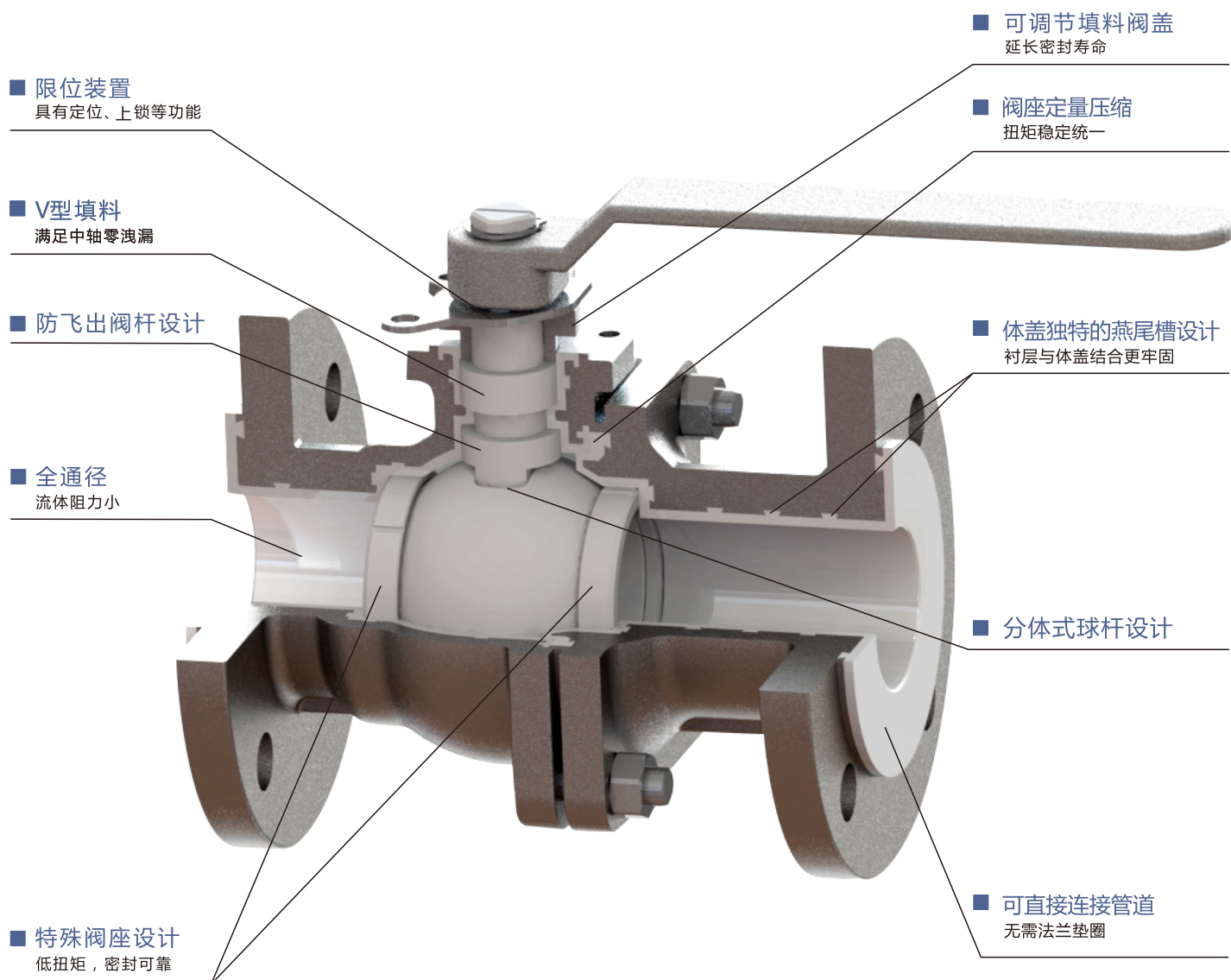
专业精神缔造完美品质

KI IS NOT JUST A VALVE  
MANUFACTURER!

INTEGRATED PRODUCTION SYSTEM COMPLETE CERTIFICATION



## 产品特点



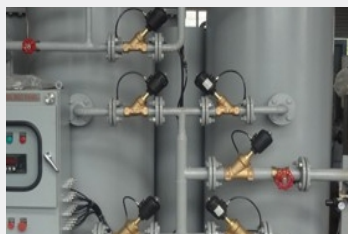
## 市场应用



石油



化工

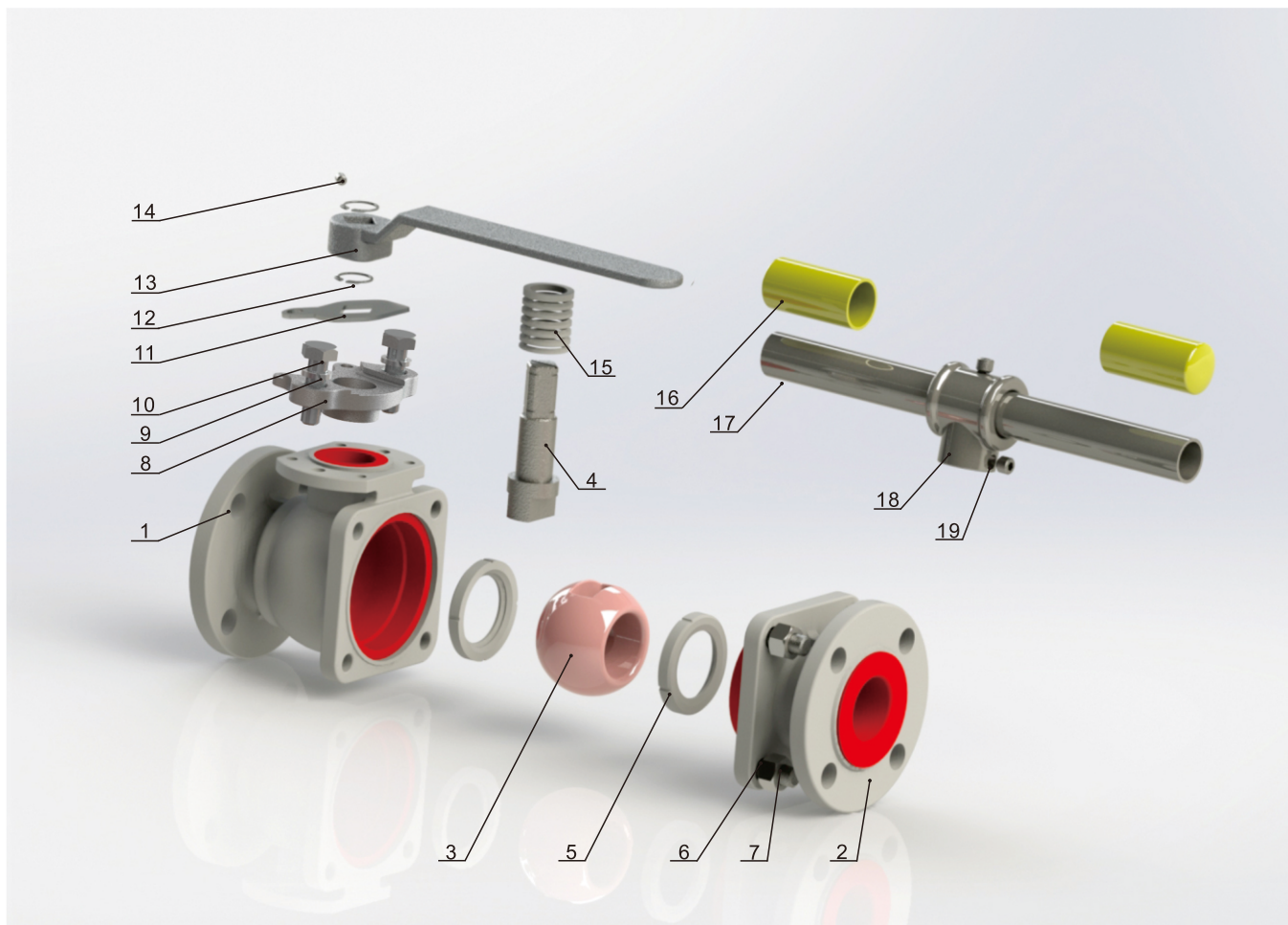


食品



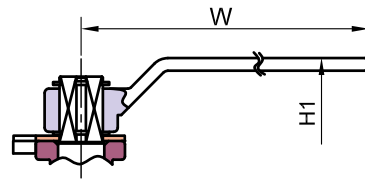
医药

## 材料

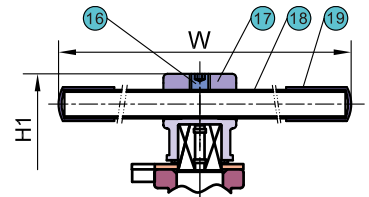


序号	零件名称	材质		
1	阀体	1.4408/CF8M+PFA	1.4308/CF8+PFA	1.0619/WCB+PFA
2	阀盖	1.4408/CF8M+PFA	1.4308/CF8+PFA	1.0619/WCB+PFA
3	阀球	1.4408/CF8M+PFA*	1.4308/CF8+PFA*	
4	阀杆	F316+PFA	F304+PFA	
5	阀座	PTFE		
6	六角螺母	A194-8/A2-70		A194-2H/8
7	全牙螺栓	A193-B8/A2-70		A193-B7/8.8
8	格兰压板	CF8		
9	平垫圈	304		
10	六角螺栓	A2-70		
11	定位片	304		
12	卡簧	304		
13	手柄 (DN15-DN50)	CF8		
14	紧固螺钉 (DN15-DN50)	A2-70		
15	填料	PTFE /TFM 1600		
16	钢管胶套 (DN65-DN100)	PVC		
17	钢管手柄 (DN65-DN100)	A53+PLATED Zn		
18	手柄连接块 (DN65-DN100)	CF8		
19	紧固螺钉 (DN65-DN100)	A2-70		

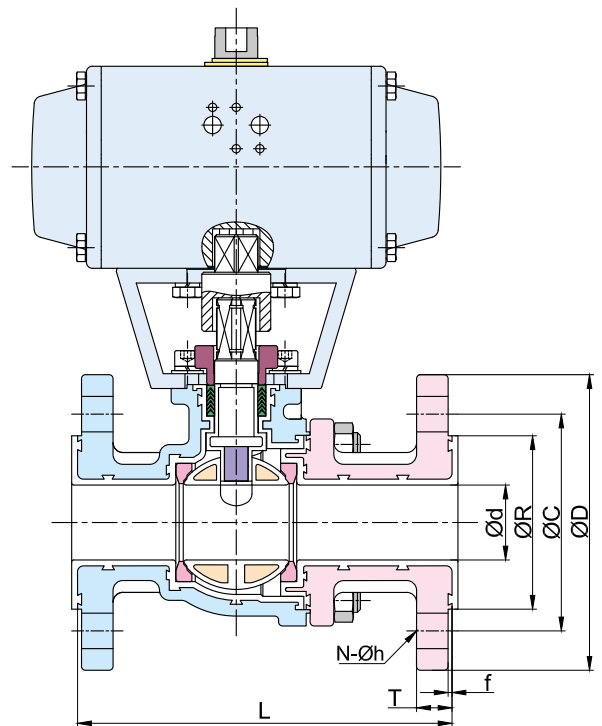
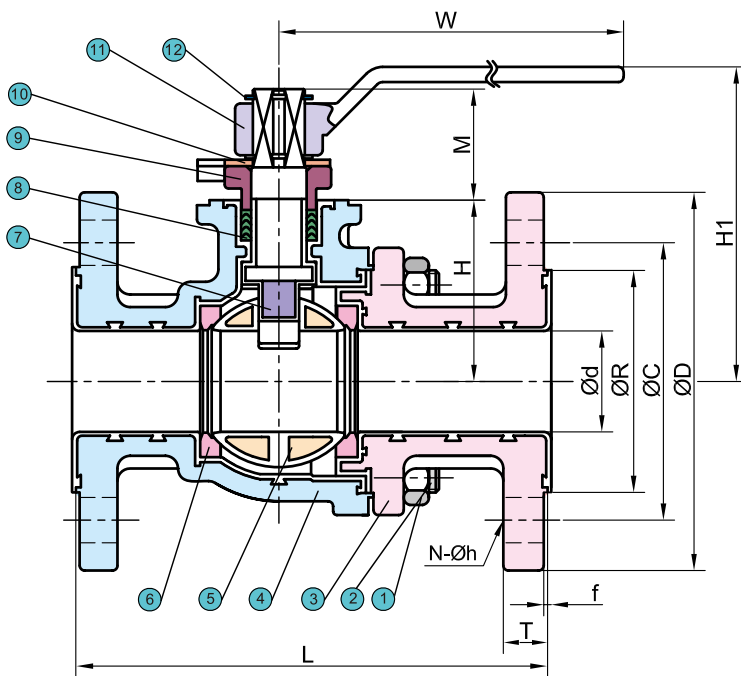
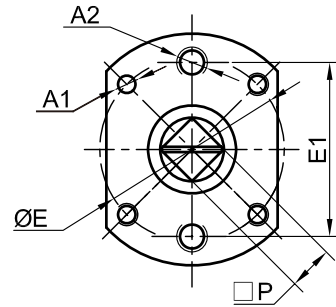
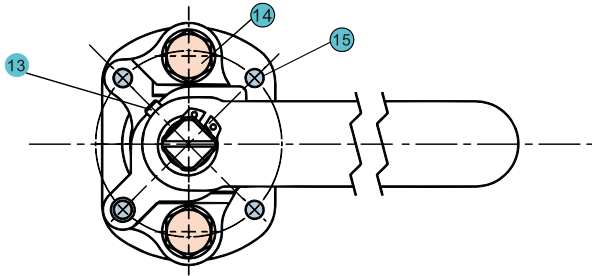
- 设计标准：GB/T 12237
- 标准级数：PN16
- 最小壁厚：GB/T 12224
- 结构长度：GB/T 12221
- 法兰接端：GB/T 9124.1
- 检验与测试标准：JB/T 9092
- 电火花检验标准：HG/T 3704



SIZE:DN25 ~ DN50



SIZE:DN65 ~ DN100

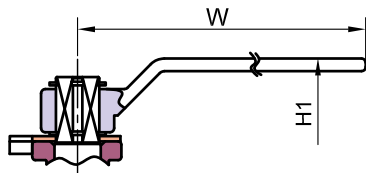


■ GB PN16

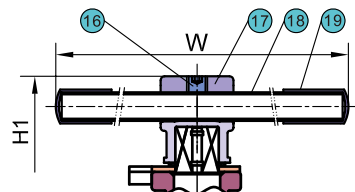
Unit:mm

SIZE	Ød	ØR	ØC	ØD	L	T	f	N	Øh	H	H1	M	W	P	ØE	E1	A1	A2	ISO5211
DN15	15	45	65	95	130	16	2	4	14	39	81.5	20	130	9	42	42	M5	M8	F04
DN20	20	58	75	105	140	18	2	4	14	46	92	26.5	140	11	50	50	M6	M8	F05
DN25	25	68	85	115	140	18	2	4	14	48	96.5	29	170	14	50	50	M6	M8	F05
DN32	32	78	100	140	165	18	2	4	18	55.5	103.5	29	170	14	50	50	M6	M8	F05
DN40	38	88	110	150	190	18	3	4	18	70	123	44	230	17	70	66	M8	M10	F07
DN50	50	102	125	165	203	18	3	4	18	76	129	44	230	17	70	66	M8	M10	F07
DN65	64	122	145	185	222	18	3	8	18	104	191	45.5	300	17	102	75	M10	M12	F10
DN80	76	138	160	200	241	20	3	8	18	119	215	50.5	400	22	102	75	M10	M12	F10
DN100	100	158	180	220	305	20	3	8	18	136	235	56	400	27	102	102	M10	M12	F10

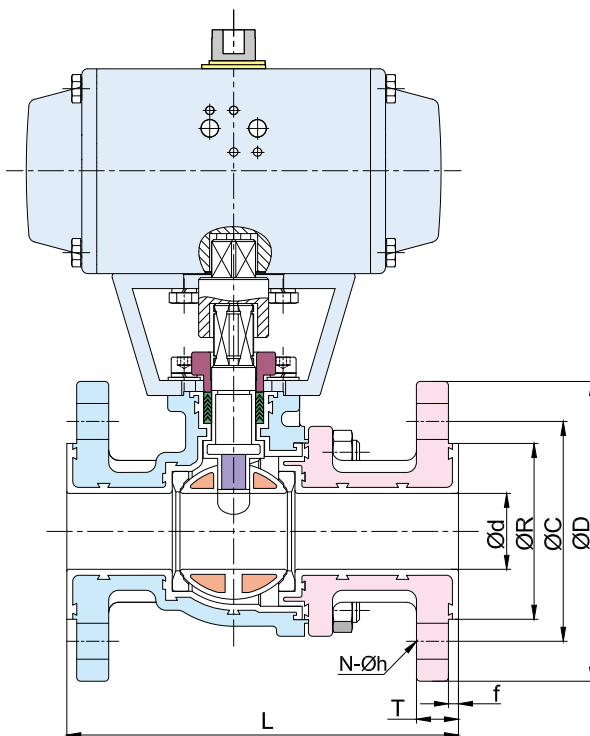
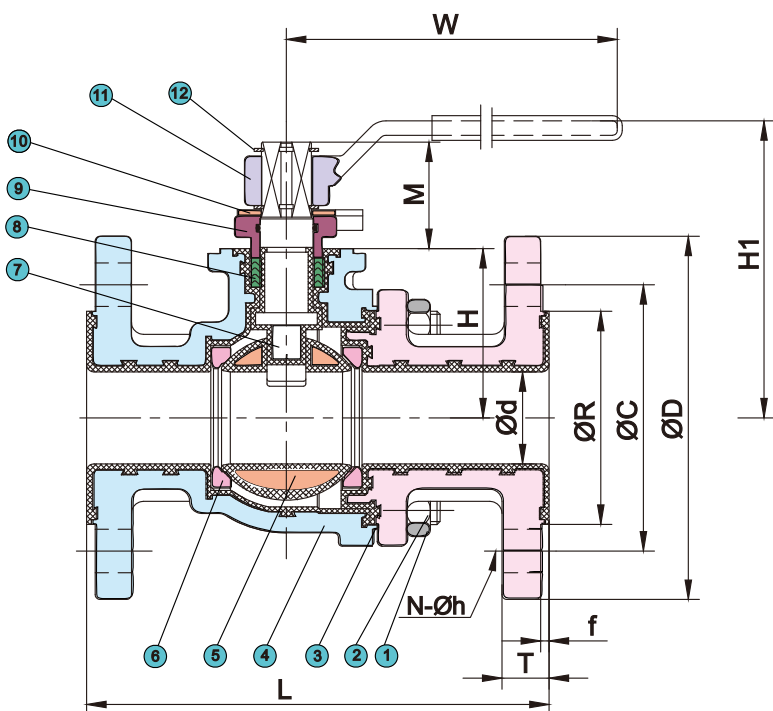
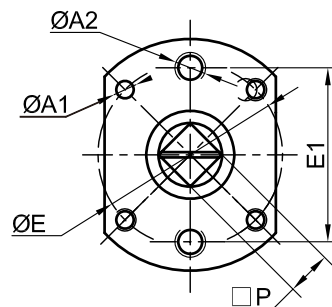
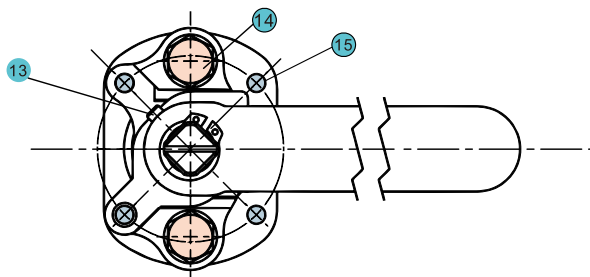
- 设计标准 : EN 12516-1
- 标准级数 : PN 16
- 最小壁厚 : EN 12516-1
- 结构长度 : EN 558 series1
- 法兰接端 : EN 1092-1
- 检验与测试标准 : EN 12266-1
- 电火花检验标准 : HG/T 3704



SIZE:DN25~DN50



SIZE:DN65~DN100

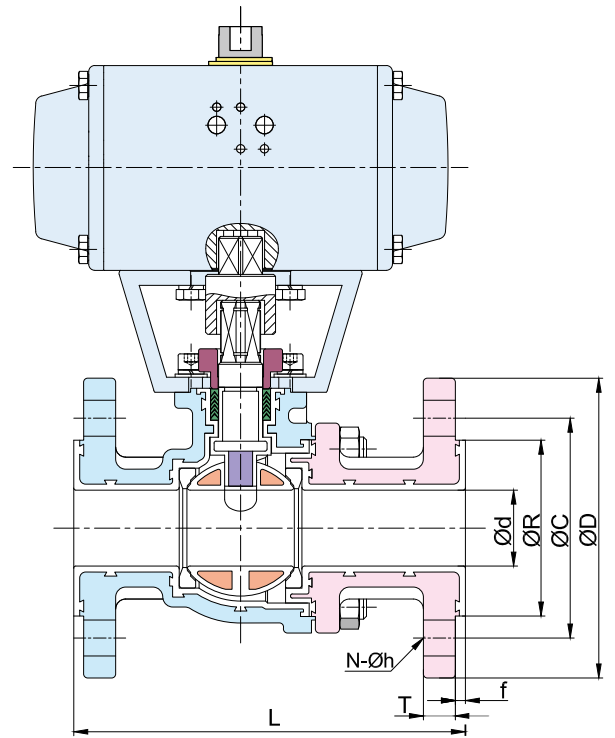
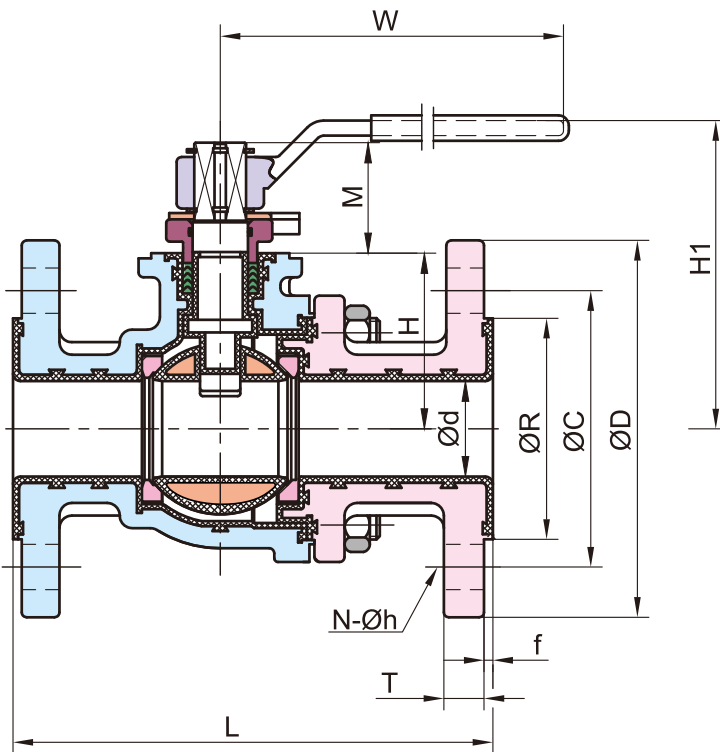
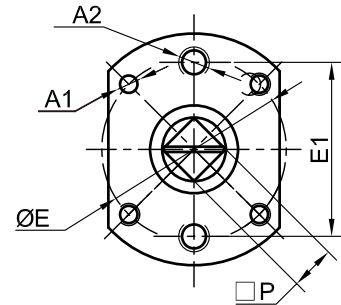
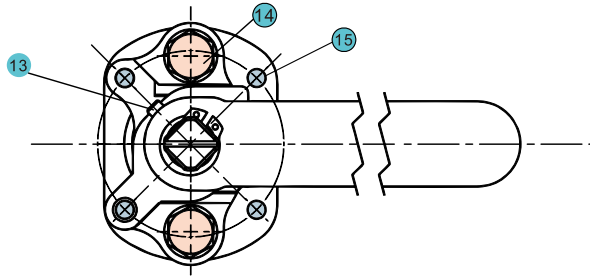
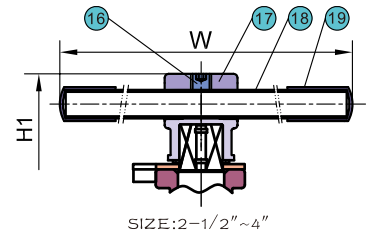
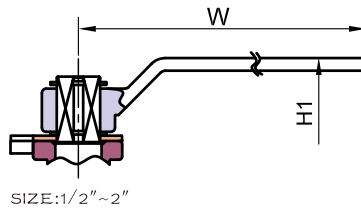


■ DIN PN16

Unit:mm

SIZE	Ød	ØR	ØC	ØD	L	T	f	N	Øh	H	H1	M	W	P	ØE	E1	A1	A2	ISO5211
DN15	15	45	65	95	130	16	2.5	4	14	39	81.5	20	130	9	42	42	M5	M8	F04
DN20	20	58	75	105	150	18	2.5	4	14	46	92	26.5	140	11	50	50	M6	M8	F05
DN25	25	68	85	115	160	18	2.5	4	14	48	96.5	29	170	14	50	50	M6	M8	F05
DN32	32	78	100	140	180	18	2.5	4	18	55.5	103.5	29	170	14	50	50	M6	M8	F05
DN40	38	88	110	150	200	18	2.5	4	18	70	123	44	230	17	70	66	M8	M10	F07
DN50	50	102	125	165	230	18	2.5	4	18	76	129	44	230	17	70	66	M8	M10	F07
DN65	64	122	145	185	290	18	2.5	8	18	104	191	45.5	300	17	102	75	M10	M12	F10
DN80	76	138	160	200	310	20	2.5	8	18	119	215	50.5	400	22	102	75	M10	M12	F10
DN100	100	158	180	220	350	20	2.5	8	18	136	235	51	400	27	102	102	M10	M12	F10

- 设计标准：ASME B16.34
- 标准级数：Class 150
- 最小壁厚：ASME B16.34
- 结构长度：ASME B16.10
- 法兰接端：ASME B16.5
- 检验与测试标准：API 598
- 电火花检验标准：HG/T 3704

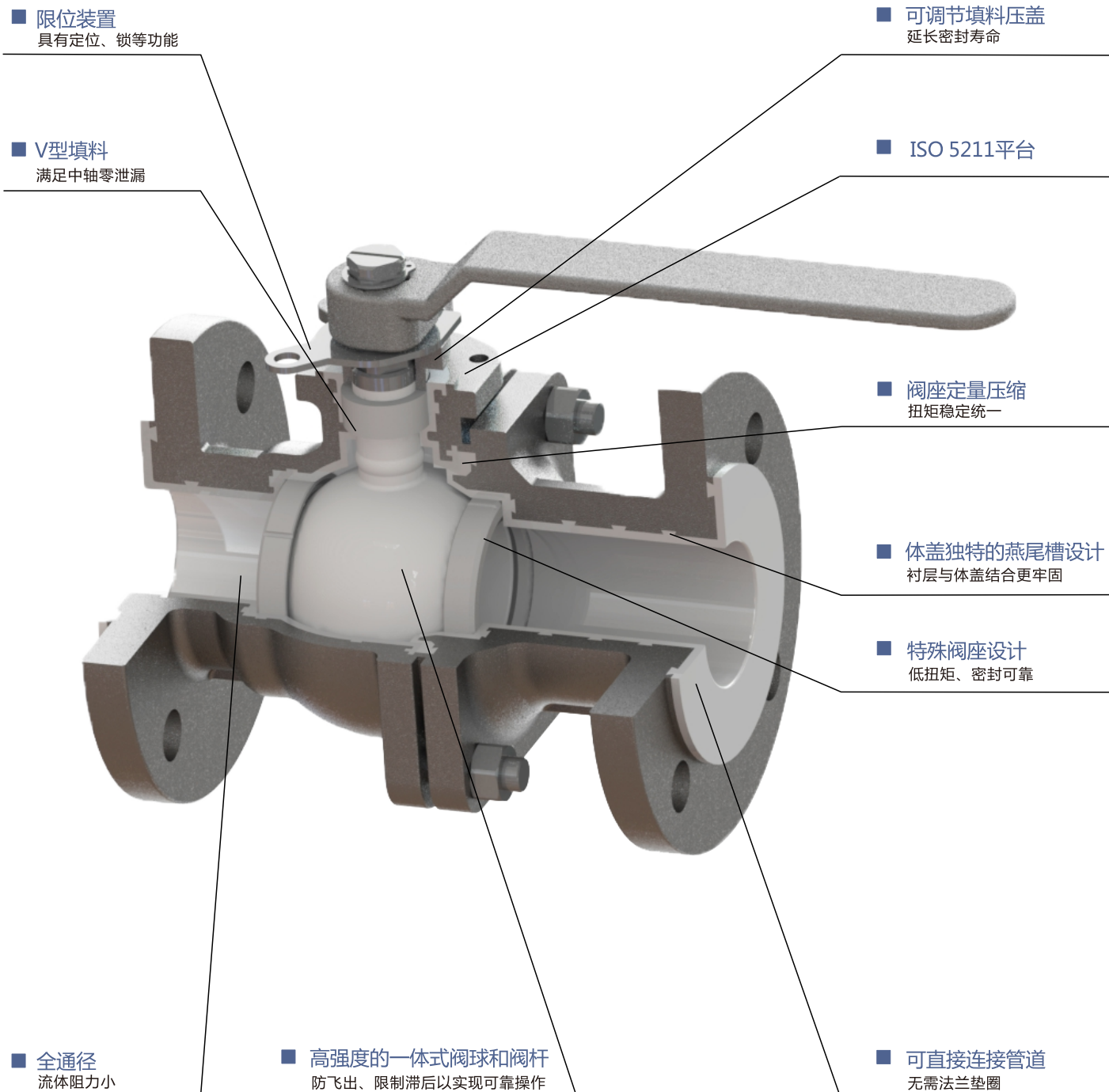


■ ASME Class 150

Unit:mm

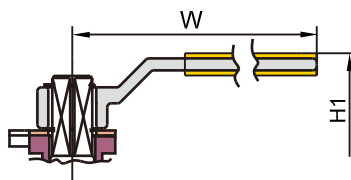
NPS	Ød	L	ØR	ØC	ØD	f	T	N	Øh	H	H1	M	W	P	A1	A2	E	E1	ISO5211
1/2	15	108	35	60.3	90	2.5	8	4	1/2-13UNC	39	81.5	20	130	9	M5	M8	42	42	F04
3/4	20	117	43	69.9	100	2.5	8.9	4	1/2-13UNC	46	92	26.5	140	11	M6	M8	50	50	F05
1	25	127	51	79.4	110	2.5	9.6	4	16	48	96.5	29	170	14	M6	M8	50	50	F05
1 1/2	38	165	73	98.4	125	2.5	12.7	4	16	70	123	44	230	17	M8	M10	70	66	F07
2	50	178	92	120.7	150	2.5	14.3	4	19	76	129	44	230	17	M8	M10	70	66	F07
2 1/2	64	190	104.8	139.7	180	2.5	16	4	19	104	191	45.5	300	17	M10	M12	102	75	F10
3	76	203	127	152.4	190	2.5	17.5	4	19	119	215	50.5	400	22	M10	M12	102	75	F10
4	100	229	157.2	190.5	230	2.5	22.3	8	19	136	235	51	400	27	M10	M12	102	102	F10

## 产品特点

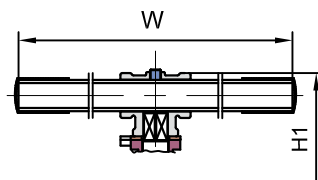




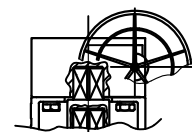
- 设计标准 : GB/T 12237
- 标准级数 : PN16
- 最小壁厚 : GB/T 12224
- 结构长度 : GB/T 12221
- 法兰接端 : GB/T 9124.1
- 检验与测试标准 : JB/T 9092
- 电火花检验标准 : HG/T 3704



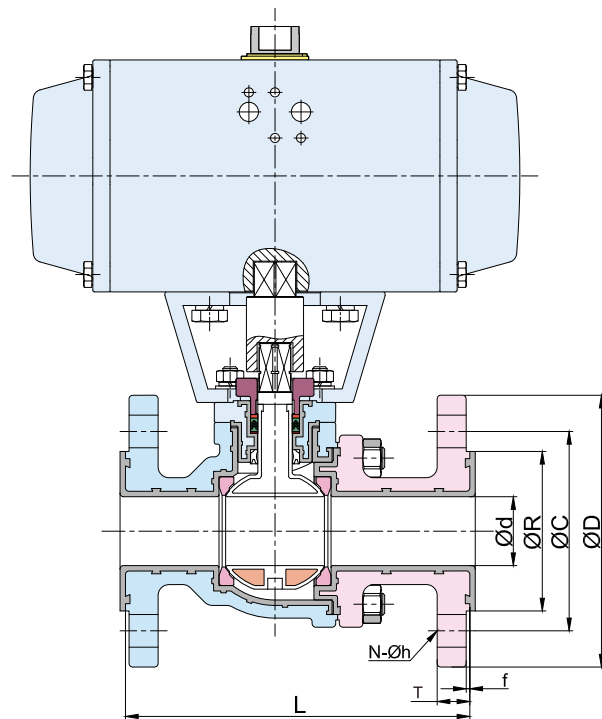
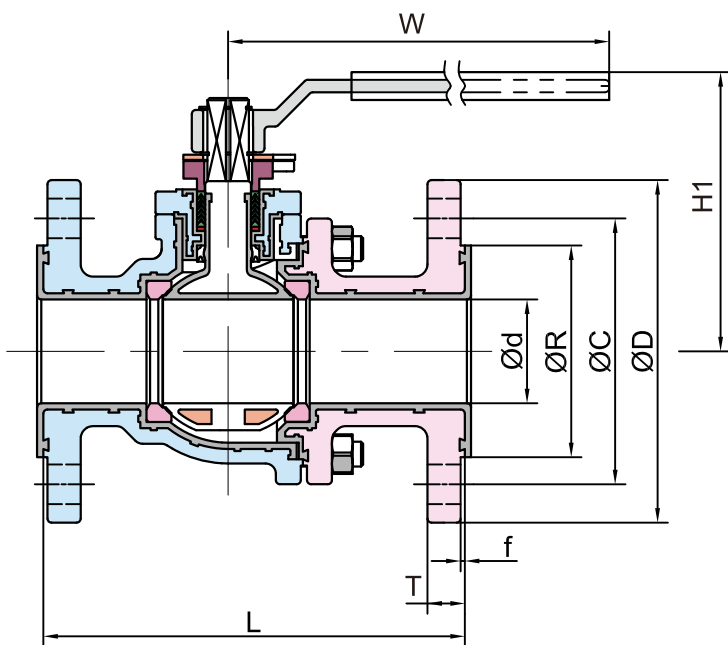
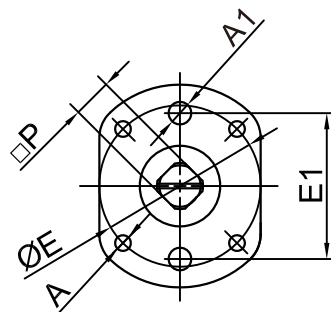
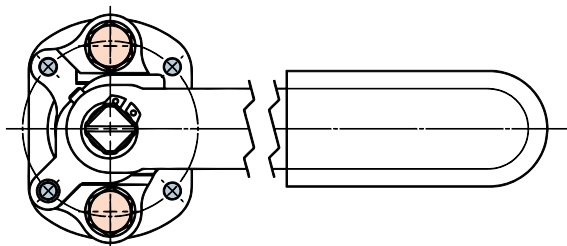
DN40 ~DN50



DN65 ~DN100



DN125 ~DN150

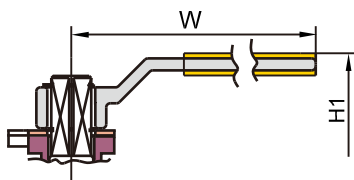


■ GB PN16

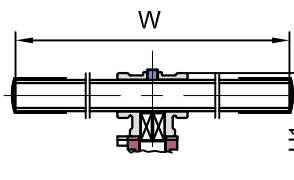
Unit:mm

DN	d	R	C	D	L	T	f	N	h	H1	W	P	E	E1	A	A1	ISO5211
40	38	88	110	150	190	18	3	4	18	126	170	14	70	66	M8	M10	F07
50	50	102	125	165	203	18	3	4	18	133	230	17	70	66	M8	M10	F07
65	64	122	145	185	222	18	3	8	18	195	300	17	102	75	M10	M12	F10
80	76	138	160	200	241	20	3	8	18	220	400	22	102	75	M10	M12	F10
100	100	158	180	220	305	20	3	8	18	235	400	27	102	102	M10	M12	F10
125	125	188	210	250	356	22	3	8	18	—	—	27	125	107	M12	M12	F12
150	151	212	240	285	394	22	3	8	22	—	—	36	140	120	M16	M12	F14

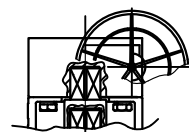
- 设计标准 : ASME B16.34
- 标准级数 : Class 150
- 最小壁厚 : ASME B16.34
- 结构长度 : ASME B16.10
- 法兰连接 : ASME B16.5
- 检验与测试标准 : API 598
- 电火花检验标准 : HG/T 3704



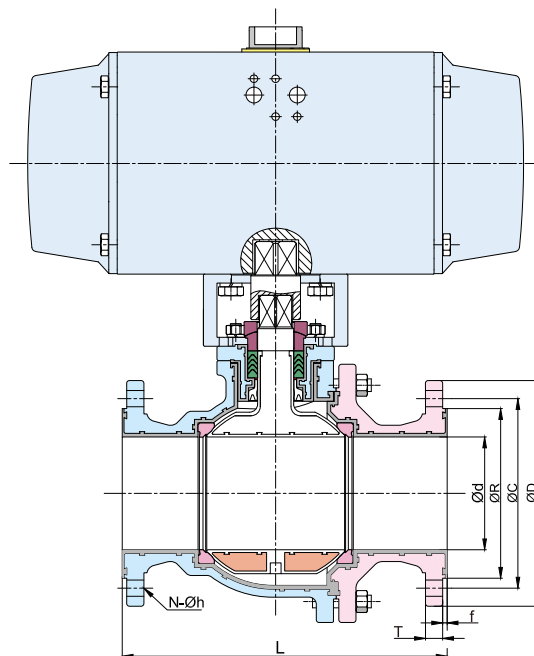
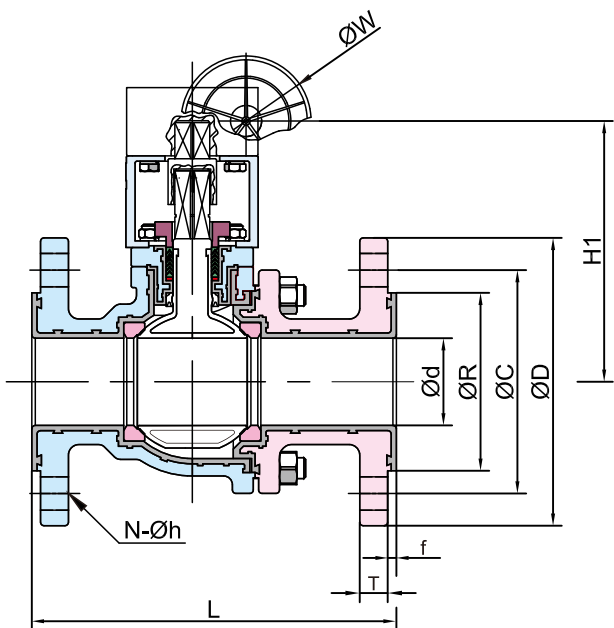
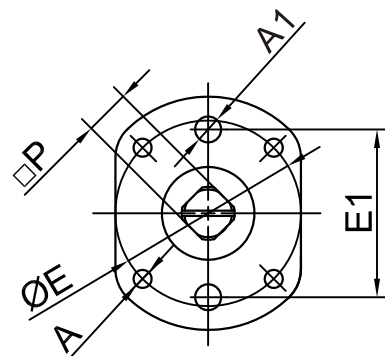
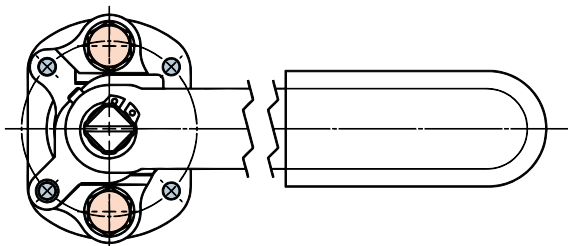
NPS1<sup>1</sup>/<sub>2</sub>~NPS2



NPS2<sup>1</sup>/<sub>2</sub>~NPS4



NPS5~NPS6

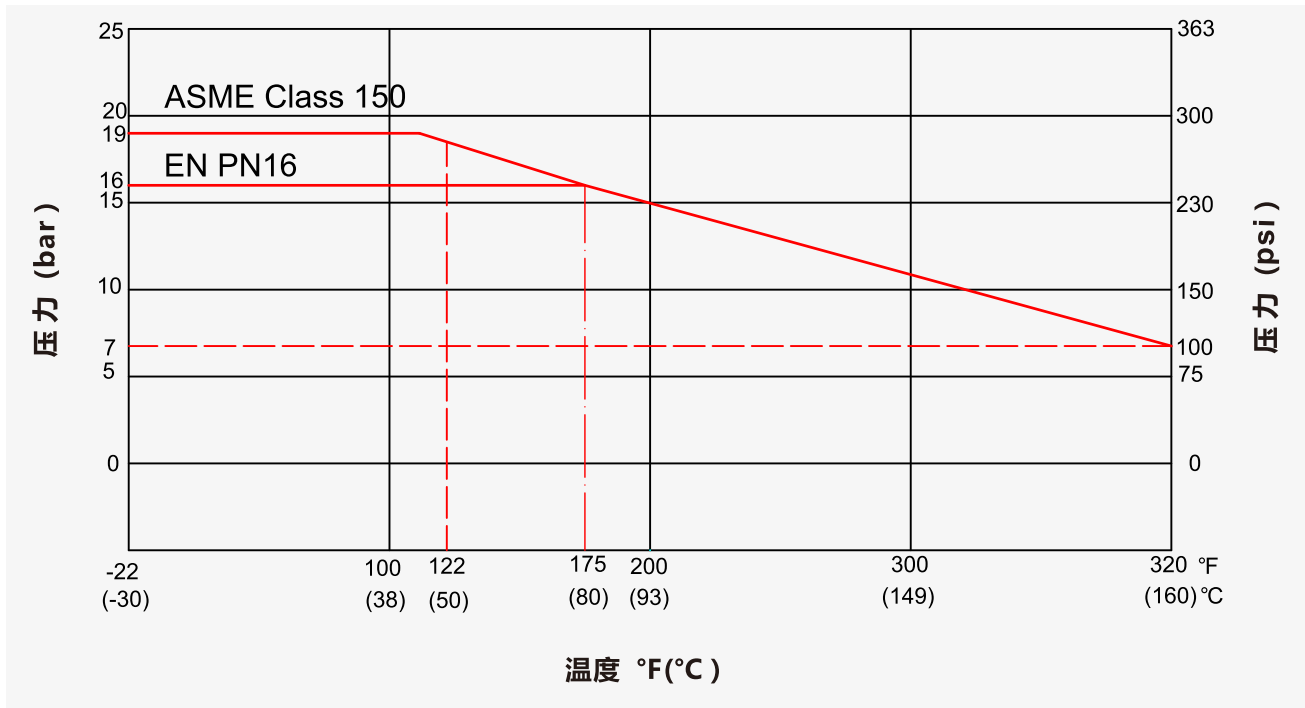


■ ASME Class 150

Unit:mm

NPS	d	R	C	D	L	f	T	N	h	H1	W	P	E	E1	A	A1	ISO5211
1 <sup>1</sup> / <sub>2</sub>	38	73.0	98.4	125	165	2.5	12.7	4	16	126	170	14	70	66	M8	M10	F07
2	50	92.1	120.7	150	178	2.5	14.3	4	19	133	230	17	70	66	M8	M10	F07
2 <sup>1</sup> / <sub>2</sub>	65	104.8	139.7	180	190	2.5	15.9	4	19	195	300	17	102	75	M10	M12	F10
3	76	127.0	152.4	190	203	2.5	17.5	4	19	220	400	22	102	75	M10	M12	F10
4	100	157.2	190.5	230	229	2.5	22.3	8	19	235	400	27	102	102	M10	M12	F10
5	125	185.7	215.9	255	356	2.5	22.3	8	22.3	—	—	27	125	107	M12	M12	F12
6	151	215.9	241.3	280	394	2.5	23.9	8	22.3	—	—	36	140	120	M16	M12	F14

## 温度、压力曲线



## Cv值

规格	DN15	DN20	DN25	DN32	DN40	DN50	DN65	DN80	DN100	DN125	DN150
Cv值	30	55	96	170	270	470	780	1150	2100	3500	5000

## 扭矩值

单位: N·m

规格	DN15	DN20	DN25	DN32	DN40	DN50	DN65	DN80	DN100	DN125	DN150	
压力	0.5Mpa	6	8	12	16	20	30	60	70	100	210	300
	1.6Mpa	6	8	12	20	24	35	65	80	110	240	350

\* 备注:表中阀门扭力值仅用作选择驱动器参考,需要根据实际工况及操作压力,增加安全系数选配执行机构。



鐵王流體控制設備有限公司 (國際業務部)

總公司: 臺灣高雄市中正一路 120 號 16 樓

Headquarters: 16F, 120, Jhongjheng 1st Road, Kaohsiung, Taiwan

Tel: +886-7-7713121 Fax: +886-7-7235165

E-mail: sales@kifc.com

國內業務

中國廣東省中山市南頭鎮南和西路23號之一

Tel: +86-760-23113929 23118284 Fax: +86-760-23123398

E-mail: info@kifc.com.cn

中山工廠: 中國廣東省中山市南頭鎮南和西路23號之一

Zhongshan Factory : 23-1, Nan-he West Rd., Nan-tou, Zhongshan City, Guangdong, China

Tel: +86-760-23113969 23116839 Fax: +86-760-23110582

福建工廠: 中國福建省古田縣黃田鎮橫山工業區

Fujian Factory: Hengshan Industrial Park, Huangtian Town, Gutian County Fujian, China

Tel: +86-593-3761598 Fax : +86-593-3762688

[www.kifc.com](http://www.kifc.com)

我司承诺不断完善与提高产品质量，因此保留在不经通知的情况下对本型录所含信息进行修改的权力，本公司拥有最终解释权。

KI-LBV 202510  
©2025. Kingdom Flow Control., Ltd  
All rights reserved.